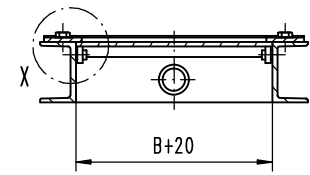
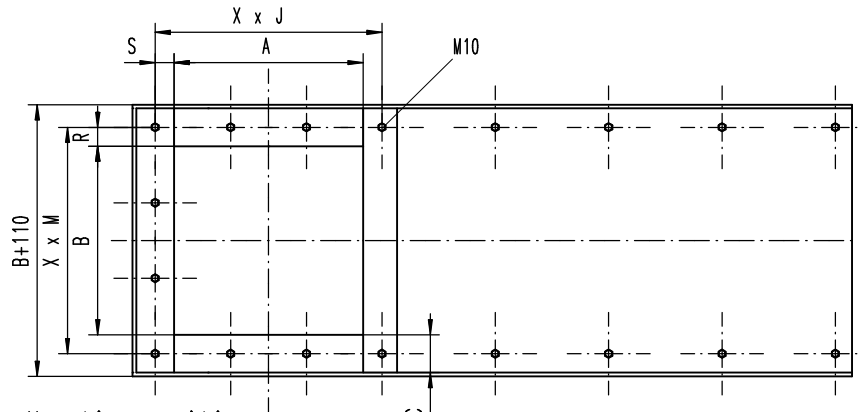


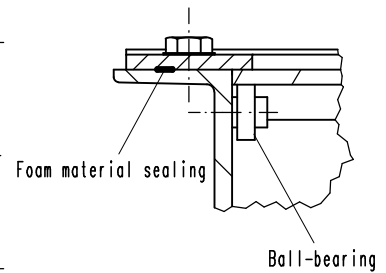
drawing shows cut A-B without spout



Support for the gate must be provided of site



Detail X



**Mounting-position:**

To be mounted only as shown on drawing. Please request if other positions are required.

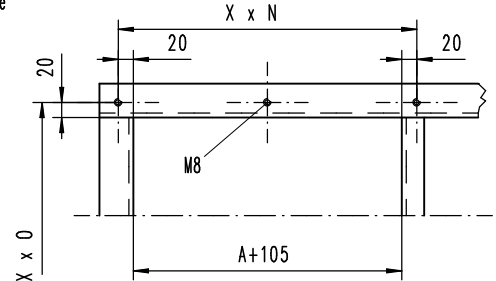
C=50 mm with Silo-outlet-gate  
C=40 mm with Redler-outlet-gate

drawing shows outlet without spout

**Areas of use:**

For all dry products where under Silos and trough-chain conveyors must be shut off. The max. overall surface at the outlet gates' inlet is  $\leq 900 \text{ cm}^2$ .

In case of larger dimensions let us have your request!  
Not suitable for pneumatic transport.



\* with spout                      \*\* without spout

	Outlet-gate			Redler-outlet-gate (cross-slide)		
Order-no. *	57621501	57622001	57622501	57122001	57122501	57123001
Order-no. **	57601501	57602001	57602501	57102001	57102501	57103001
Ø Pipe	150	200	250	200	250	300
ØD inside	149	199	249	199	249	299
A	200	250	300	200	250	300
B	200	250	300	600	600	600
F	852	952	1052	852	952	1052
R	25	25	25	30	30	30
S	25	25	25	23	23	23
XxJ	2x125	2x150	3x116,6	1x246	1x296	1x346
XxM	2x125	2x150	3x116,6	6x110	6x110	6x110
P	300	350	400	680	680	680
H	150	150	150	360	320	270
XxN	3x115	3x131.6	4x111.25	3x115	3x131.6	4x111.25
XxO	2x130	3x103.3	3x120	6x110	6x110	6x110
Weight in kg *			52,0			

Cylinder-unit     Cylinder D=63 with 30 mm extension of piston-shaft     stroke= A+10mm, p min.= 5 bar  
5/2 -way-solenoid-valve (1-coil)  
Proximity-switches max. 230V , AC/DC

Denomination

Outlet-gate pneum. operated

Date     03/93

Drawing-No.     571...01     Index