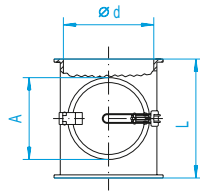


Kontrollrohre
Inspection-pipes
Conduits à regard



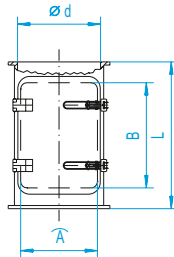
Bei pulverbeschichteter/verzinkter Oberfläche:
Dichtung NBR, temperaturbeständig -20 °C bis +100 °C. Lebensmittelqualität konform EG 1935/2004
In the case of powder-coated/galvanized surfaces:
Seal made of NBR, temperature resistant between -20 °C and +100 °C. Food grade standard, in accordance with 1935/2004 (EC)
Pour les surfaces galvanisées/avec revêtement par pulvérisation :
joint NBR, résistance aux températures de -20 °C à +100 °C. Conformité qualité alimentaire CE 1935/2004

Ausführung in Chromnickelstahl
Dichtung Silikon: Temperaturbeständigkeit -60 °C bis +250 °C, Lebensmittelqualität konform EG 1935/2004 und FDA
Stainless steel version
Silicone (SI) seal: Temperature resistance -60 °C bis +250 °C, food grade standard, in accordance with 1935/2004 (EC) and FDA
Modèle en acier inoxydable
Joint en silicone (SI) : Résistance aux températures -60 °C bis +250 °C, conformité qualité alimentaire CE 1935/2004 et FDA

Abmessungen für 1,5 mm Rohrteile
Dimensions for 1.5 mm piping
Dimensions pour tuyauterie en épaisseur 1,5 mm

DN	Ø d	A	B	C	E	F	L	kg
60	-	-	-	-	-	-	-	-
80	77	80	-	-	-	-	200	1,05
100	100	115	-	-	-	-	200	1,25
120	120	115	-	-	-	-	200	1,45
140	136	115	-	-	-	-	200	1,55
150	150	115	-	-	-	-	200	1,65
175	175	115	-	-	-	-	200	1,85
200	200	115	-	-	-	-	200	2,00
224	220	115	-	-	-	-	200	2,25
250	250	115	-	-	-	-	200	2,40
280	277	115	-	-	-	-	200	2,60
300	300	115	-	-	-	-	200	2,85
315	312	115	-	-	-	-	200	2,80
350	350	115	-	-	-	-	200	3,40
400	399	115	-	-	-	-	200	3,80

Reinigungsrohre
Cleaning-pipes
Tuyaux de nettoyage



200	200	224	350	-	-	-	486	4,70
224	220	224	350	-	-	-	486	5,20
250	250	224	350	-	-	-	486	5,70
280	277	224	350	-	-	-	486	6,30
300	300	350	350	-	-	-	486	6,50
315	312	350	350	-	-	-	486	6,70
350	350	350	350	-	-	-	486	8,40
400	399	350	350	-	-	-	486	9,10
450	448	500	350	-	-	-	486	11,60
500	498	500	350	-	-	-	486	12,80
560	558	500	350	-	-	-	486	14,30
630	628	500	350	-	-	-	486	16,00

Bei pulverbeschichteter/verzinkter Oberfläche:
Dichtung NBR, temperaturbeständig -20 °C bis +100 °C. Lebensmittelqualität konform EG 1935/2004
In the case of powder-coated/galvanized surfaces:
Seal made of NBR, temperature resistant between -20 °C and +100 °C. Food grade standard, in accordance with 1935/2004 (EC)
Pour les surfaces galvanisées/avec revêtement par pulvérisation :
joint NBR, résistance aux températures de -20 °C à +100 °C. Conformité qualité alimentaire CE 1935/2004

Ausführung in Chromnickelstahl
Dichtung Silikon: Temperaturbeständigkeit -60 °C bis +250 °C, Lebensmittelqualität konform EG 1935/2004 und FDA
Stainless steel version
Silicone (SI) seal: Temperature resistance -60 °C bis +250 °C, food grade standard, in accordance with 1935/2004 (EC) and FDA
Modèle en acier inoxydable
Joint en silicone (SI) : Résistance aux températures -60 °C bis +250 °C, conformité qualité alimentaire CE 1935/2004 et FDA

DN	1,5 mm pulverbeschichtet 1,5 mm powder-coated 1,5 mm thermolaquage	2 mm pulverbeschichtet 2 mm powder-coated 2 mm thermolaquage	3 mm pulverbeschichtet 3 mm powder-coated 3 mm thermolaquage	1,5 mm verzinkt 1,5 mm galvanized 1,5 mm galvanisé	1 mm Chromnickelstahl 1 mm stainless steel 1 mm acier inoxydable	1,5 mm Chromnickelstahl 1,5 mm stainless steel 1,5 mm acier inoxydable	2 mm Chromnickelstahl 2 mm stainless steel 2 mm acier inoxydable
	Nr.	Nr.	Nr.	Nr.	Nr.	Nr.	Nr.
60	-	-	-	-	-	-	-
80	11081190	-	-	11082190	11083190	-	-
100	11101190	-	-	11102190	11103190	-	12103190
120	11121190	-	13121190	11122190	11123190	-	12123190
140	11141190	-	-	11142190	11143190	-	-
150	11151190	-	13151190	11152190	11153190	-	12153190
175	11171190	-	13171190	11172190	11173190	-	12173190
200	11201190	-	13201190	11202190	11203190	-	12203190
224	11221190	-	-	11222190	11223190	-	-
250	11251190	-	13251190	11252190	11253190	-	12253190
280	11281190	-	-	11282190	-	11283190	-
300	11301190	-	13301190	11302190	11303190	-	12303190
315	11311190	-	-	11312190	-	11313190	-
350	11351190	-	13351190	11352190	11353190	-	12353190
400	11401190	-	13401190	11402190	11403190	-	12403190

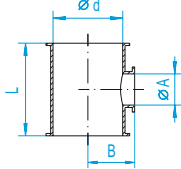
Verstärkte, druckstoßfeste Ausführung bis 3 bar auf Anfrage.
Reinforced, shock explosion proof to 3 bar version available on request.
Version renforcée, résistante à la surpression jusqu'à 3 bar sur demande.

2010

200	11201195	-	-	-	11202195	-	-	11203195	-	-
224	11221195	-	-	-	11222195	-	-	11223195	-	-
250	11251195	-	-	-	11252195	-	-	11253195	-	-
280	11281195	-	-	-	11282195	-	-	11283195	-	-
300	11301195	-	-	-	11302195	-	-	11303195	-	-
315	11311195	-	-	-	11312195	-	-	11313195	-	-
350	11351195	-	-	-	11352195	-	-	11353195	-	-
400	11401195	-	-	-	11402195	-	-	11403195	-	-
450	-	-	12451195	-	-	12452195	*	-	-	12453195
500	-	-	12501195	-	-	12502195	*	-	-	12503195
560	-	-	12561195	-	-	12562195	*	-	-	12563195
630	-	-	12631195	-	-	12632195	*	-	-	12633195

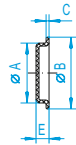
* 2 mm

2020

Kontrollstutzen ohne Gummideckel
Inspection T-pieces without rubber cover
Manchons de contrôle sans couvercle de caoutchouc

 Abmessungen für 1,5 mm Rohrteile
 Dimensions for 1.5 mm piping
 Dimensions pour tuyauterie en épaisseur 1,5 mm

DN	Ø d	A	B	C	E	F	L	kg
60+80	-	-	-	-	-	-	-	-
100	100	100	79	-	-	-	165	0,70
120	120	100	89	-	-	-	165	0,80
150	150	120	100	-	-	-	198	1,20
175	175	150	114	-	-	-	225	1,50
200	200	150	125	-	-	-	225	1,75
250	250	150	150	-	-	-	225	2,20
280	-	-	-	-	-	-	-	-
300	300	150	177	-	-	-	225	2,55

 Abgang Ø A für Gummideckel beachten.
 Observe outlet Ø A for rubber cover.
 Respecter la sortie Ø A pour le couvercle de caoutchouc.

Gummideckel
Rubber covers
Couvercle de caoutchouc

 Abmessungen (mm)
 Dimensions (mm)
 Dimensions (mm)

DN	Ø d	A	B	C	E	F	L	kg
60	-	-	-	-	-	-	-	-
80	-	79	109	6	22	-	-	0,10
100	-	101	122	5	22	-	-	0,15
120	-	121	140	6	24	-	-	0,20
150	-	151	176	7	33	-	-	0,35
175	-	176	205	7	35	-	-	0,45
200	-	201	228	8	40	-	-	0,60
250	-	251	280	10	42	-	-	0,90
300	-	301	328	8	40	-	-	1,35

Zusätzliche Deckel-Arretierungen
Additional cover locks
Verrouillage supplémentaire du couvercle


DN	Ø d	A	B	C	E	F	L	kg
100	-	-	-	100	-	-	-	0,30
120	-	-	-	120	-	-	-	0,35
150	-	-	-	150	-	-	-	0,55

DN	1,5 mm pulverbeschichtet 1,5 mm powder-coated 1,5 mm thermolaquage	2 mm pulverbeschichtet 2 mm powder-coated 2 mm thermolaquage	3 mm pulverbeschichtet 3 mm powder-coated 3 mm thermolaquage	1,5 mm verzinkt 1,5 mm galvanized 1,5 mm galvanisé	2 mm verzinkt 2 mm galvanized 2 mm galvanisé	1 mm Chromnickelstahl 1 mm stainless steel 1 mm acier inoxydable	2 mm Chromnickelstahl 2 mm stainless steel 2 mm acier inoxydable
	Nr.	Nr.	Nr.	Nr.	Nr.	Nr.	Nr.
	Kontrollstutzen siehe T-Stücke S. 54/55.		Inspection T-pieces see T-pieces on page 54/55.		Manchons de contrôle voir pièces en T page 54/55.		
100	11101200	-	-	11102200	-	11103200	12103200
120	11121200	-	13121200	11122200	-	11123200	12123200
150	11151200	-	13151200	11152200	-	11153200	12153200
175	11171200	12171200	13171200	11172200	-	11173200	12173200
200	11201200	12201200	13201200	11202200	-	11203200	12203200
250	11251200	12251200	13251200	11252200	-	11253200	12253200
280	-	-	-	-	-	-	-
300	11301200	12301200	13301200	11302200	-	11303200	12303200

1040

DN	NBR (-30 °C bis +90 °C)	TPE (-30 °C bis +100 °C)	SI (-60 °C bis +200 °C)	NBR	TPE	SI (Silicone)
	Nr.	Nr.	Nr.	Farbe: dunkelgrau, nicht lebensmittelgeeignet.	Farbe: weiß, lebensmittelgeeignet konform EG 1935/2004 und FDA.	Farbe: beige, lebensmittelgeeignet konform FDA.
60	-	-	-	Farbe: beige, lebensmittelgeeignet konform FDA. <td>Farbe: weiß, lebensmittelgeeignet konform EG 1935/2004 und FDA. <td>Farbe: beige, lebensmittelgeeignet konform FDA. </td></td>	Farbe: weiß, lebensmittelgeeignet konform EG 1935/2004 und FDA. <td>Farbe: beige, lebensmittelgeeignet konform FDA. </td>	Farbe: beige, lebensmittelgeeignet konform FDA.
80	-	1008520109	10087201	Colour: dark grey, not suited for use with food. <td>Colour: white, food grade standard, in accordance with 1935/2004 (EC) and FDA. <td>Colour: beige, food grade standard, in accordance with FDA. </td></td>	Colour: white, food grade standard, in accordance with 1935/2004 (EC) and FDA. <td>Colour: beige, food grade standard, in accordance with FDA. </td>	Colour: beige, food grade standard, in accordance with FDA.
100	10106201	1010520109	10107201	Colour: dark grey, not suited for use with food. <td>Colour: white, food grade standard, in accordance with 1935/2004 (EC) and FDA. <td>Colour: beige, food grade standard, in accordance with FDA. </td></td>	Colour: white, food grade standard, in accordance with 1935/2004 (EC) and FDA. <td>Colour: beige, food grade standard, in accordance with FDA. </td>	Colour: beige, food grade standard, in accordance with FDA.
120	10126201	1012520109	10127201	Colour: dark grey, not suited for use with food. <td>Colour: white, food grade standard, in accordance with 1935/2004 (EC) and FDA. <td>Colour: beige, food grade standard, in accordance with FDA. </td></td>	Colour: white, food grade standard, in accordance with 1935/2004 (EC) and FDA. <td>Colour: beige, food grade standard, in accordance with FDA. </td>	Colour: beige, food grade standard, in accordance with FDA.
150	10156201	1015520109	10157201	Colour: dark grey, not suited for use with food. <td>Colour: white, food grade standard, in accordance with 1935/2004 (EC) and FDA. <td>Colour: beige, food grade standard, in accordance with FDA. </td></td>	Colour: white, food grade standard, in accordance with 1935/2004 (EC) and FDA. <td>Colour: beige, food grade standard, in accordance with FDA. </td>	Colour: beige, food grade standard, in accordance with FDA.
175	10176201	1017520109	10177201	Colour: dark grey, not suited for use with food. <td>Colour: white, food grade standard, in accordance with 1935/2004 (EC) and FDA. <td>Colour: beige, food grade standard, in accordance with FDA. </td></td>	Colour: white, food grade standard, in accordance with 1935/2004 (EC) and FDA. <td>Colour: beige, food grade standard, in accordance with FDA. </td>	Colour: beige, food grade standard, in accordance with FDA.
200	10206201	1020520109	10207201	Colour: dark grey, not suited for use with food. <td>Colour: white, food grade standard, in accordance with 1935/2004 (EC) and FDA. <td>Colour: beige, food grade standard, in accordance with FDA. </td></td>	Colour: white, food grade standard, in accordance with 1935/2004 (EC) and FDA. <td>Colour: beige, food grade standard, in accordance with FDA. </td>	Colour: beige, food grade standard, in accordance with FDA.
250	10256201	1025520109	10257201	Colour: dark grey, not suited for use with food. <td>Colour: white, food grade standard, in accordance with 1935/2004 (EC) and FDA. <td>Colour: beige, food grade standard, in accordance with FDA. </td></td>	Colour: white, food grade standard, in accordance with 1935/2004 (EC) and FDA. <td>Colour: beige, food grade standard, in accordance with FDA. </td>	Colour: beige, food grade standard, in accordance with FDA.
300	10306201	1030520109	10307201	Colour: dark grey, not suited for use with food. <td>Colour: white, food grade standard, in accordance with 1935/2004 (EC) and FDA. <td>Colour: beige, food grade standard, in accordance with FDA. </td></td>	Colour: white, food grade standard, in accordance with 1935/2004 (EC) and FDA. <td>Colour: beige, food grade standard, in accordance with FDA. </td>	Colour: beige, food grade standard, in accordance with FDA.

3030

DN	Nr.	2 mm galvanisch verzinkt	2 mm electro galvanized	2 mm électro galvanisé
100	11102210	Für Kontrollstutzen Ø 100 und 120 mm	For inspection T-piece Ø 100 and 120 mm	Pour manchons de contrôle Ø 100 et 120 mm
120	11122210	Für Kontrollstutzen Ø 150 mm	For inspection T-piece Ø 150 mm	Pour manchons de contrôle Ø 150 mm
150	11152210	Für Kontrollstutzen Ø 175 bis 300 mm	For inspection T-piece Ø 175 to 300 mm	Pour manchons de contrôle Ø 175 à 300 mm

3040